



LYME-OLD LYME YOUTH SURVEY 2017

**In Collaboration with
Lymes' Youth Service Bureau and
Lyme-Old Lyme Schools**

*Grant support from CT Department of Mental Health and Addiction Services
through Child and Family Agency of SE CT*

Our Mission

To prevent and reduce alcohol and other drug use among youth by collaborating with the community to raise awareness, modify social norms, educate youth and adults, initiate policy change and promote healthy activities.

**Don't be
a party to
underage
drinking**

It's against the law.



Sponsored in part by a grant from the
CT Department of Mental Health and Addiction Services
and Child and Family Agency of SE CT



lysb



PLEASE RECYCLE



Turn in your unused or expired medication for safe disposal

DRUG TAKE BACK DAY
OLD LYME FIRE HOUSE - Lyme Street
Saturday, April 28, 2018
10 AM to 2 PM

10 AM to 2 PM

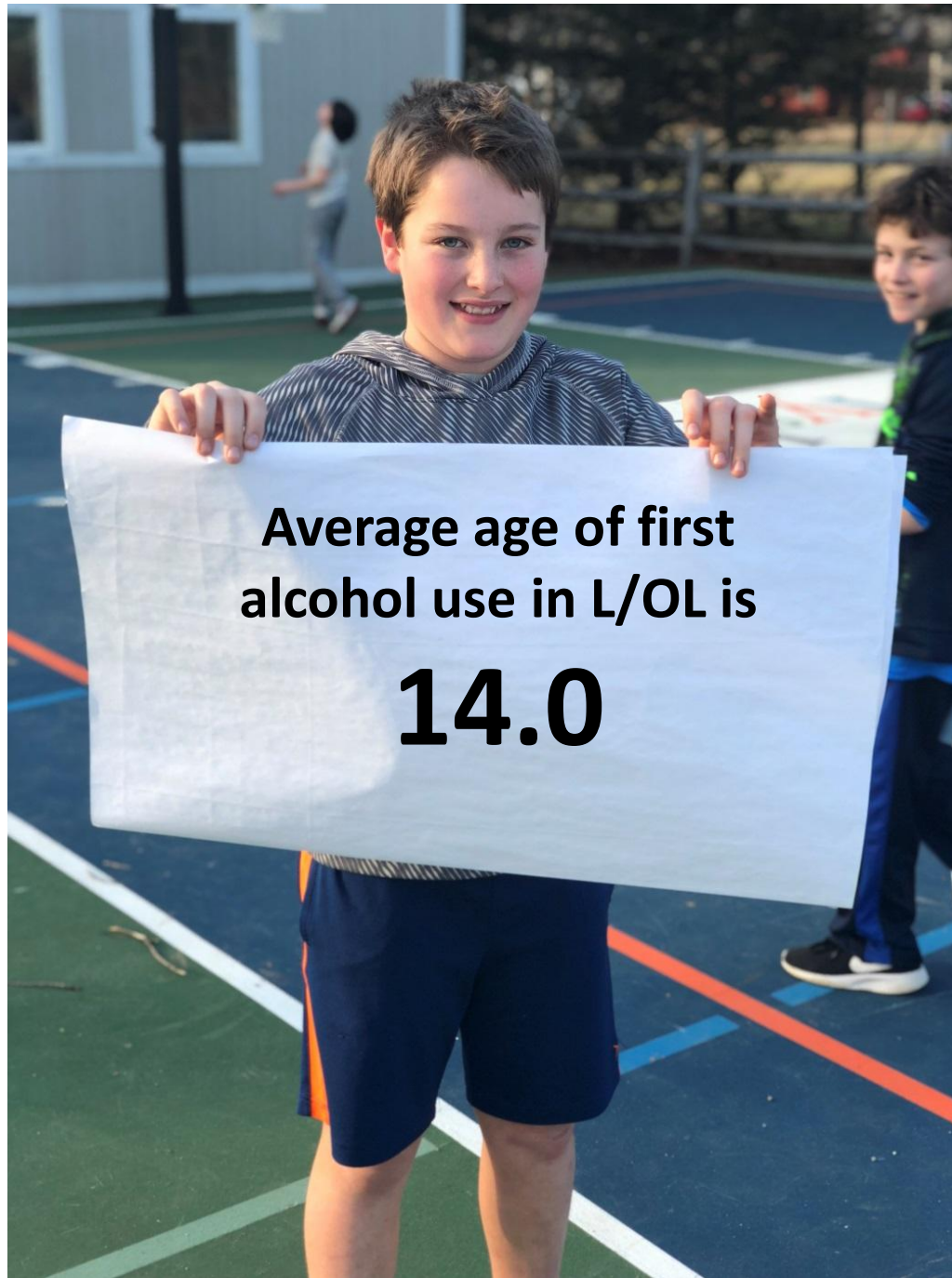


> EMPOWERING YOUTH FOR A BETTER FUTURE

About the Survey

- December 2017, grades 6 – 12
- Anonymous through Survey Monkey
- 733 students surveyed, 26 excluded
- 0.7% Margin of error for all grades, up to 3.9% per class
- Looking for trends and new behaviors among middle and high school students.

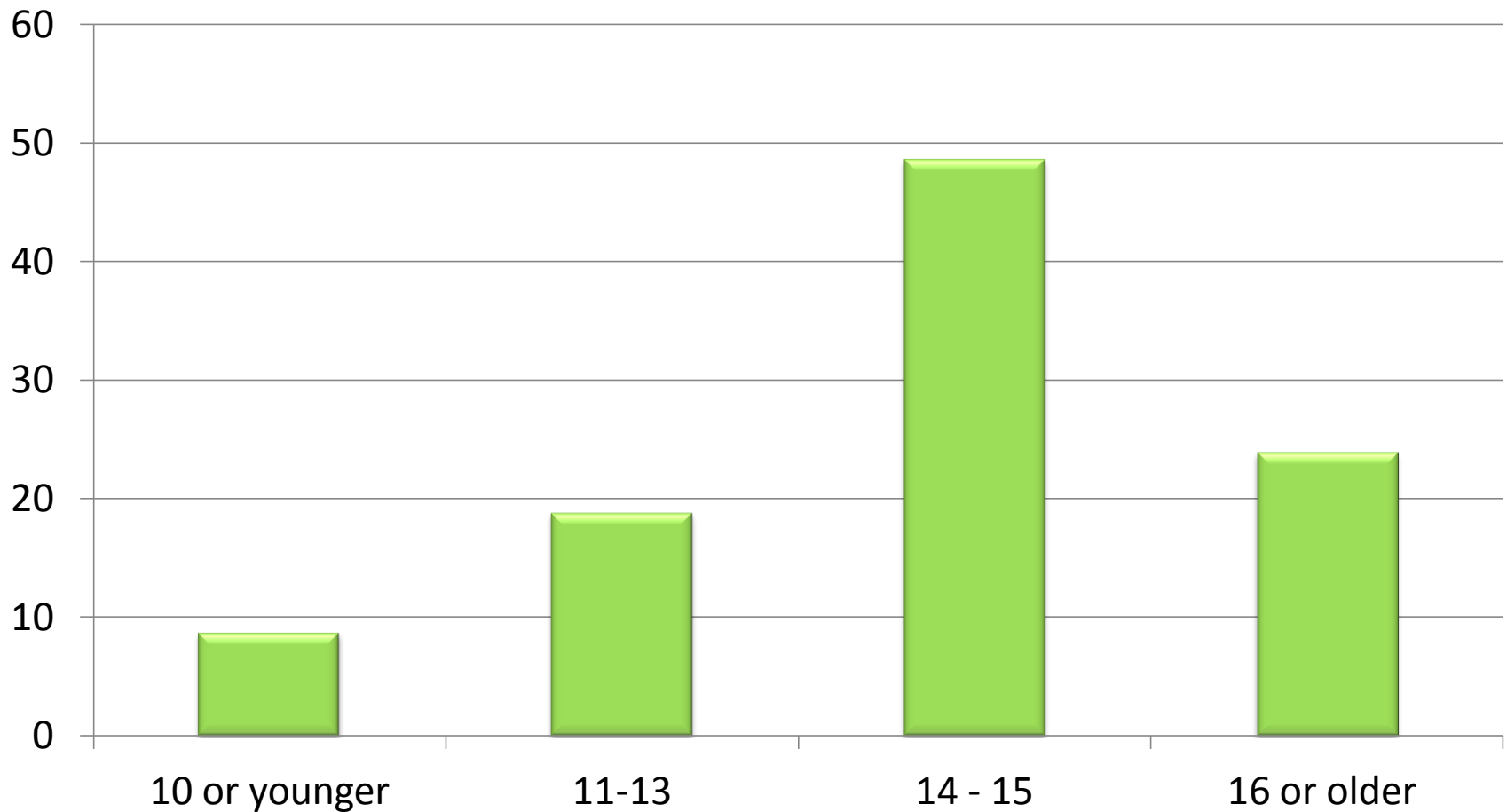
ALCOHOL



**Average age of first
alcohol use in L/OL is**

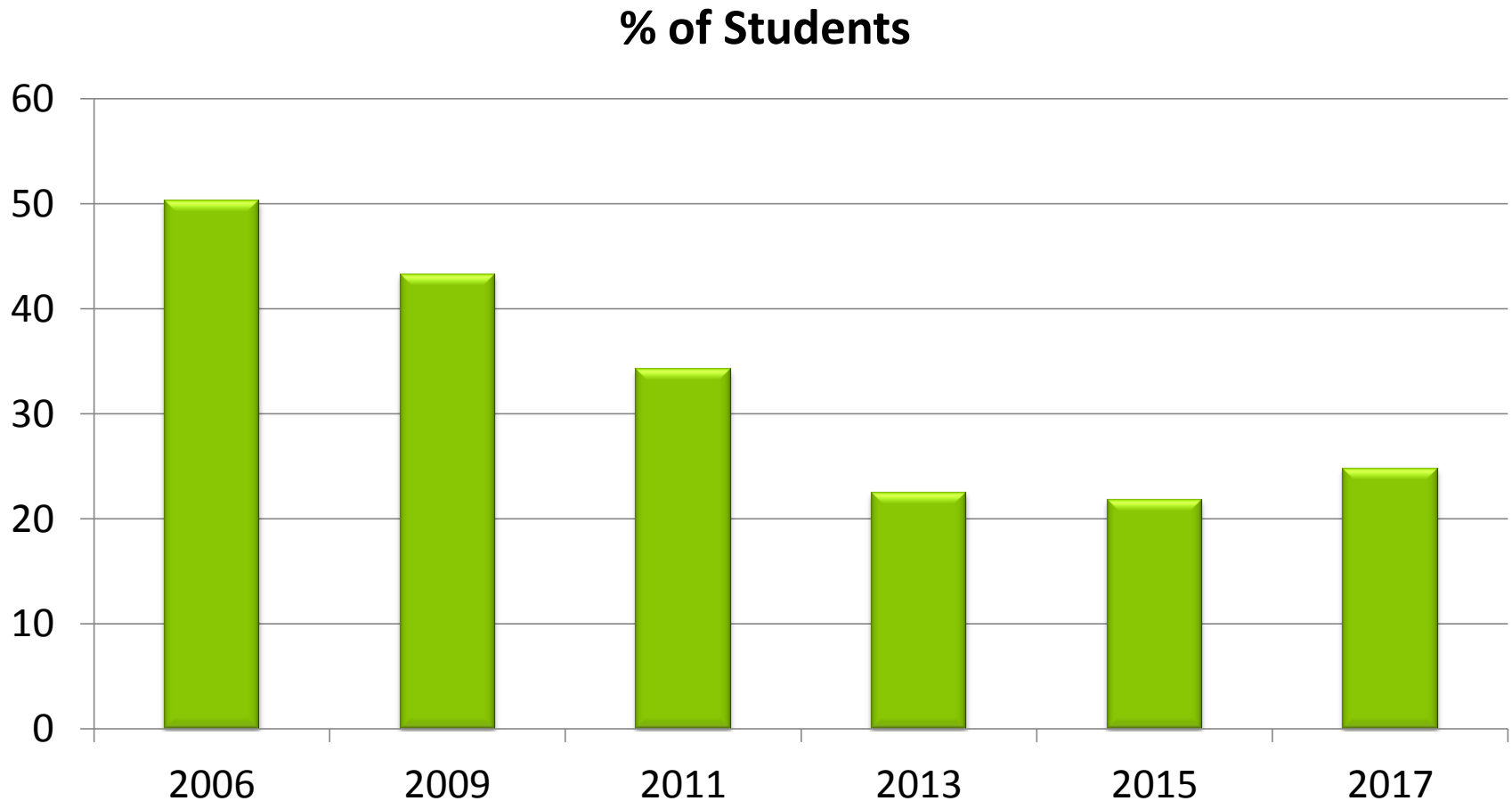
14.0

Age of First Use in L/OL: Alcohol



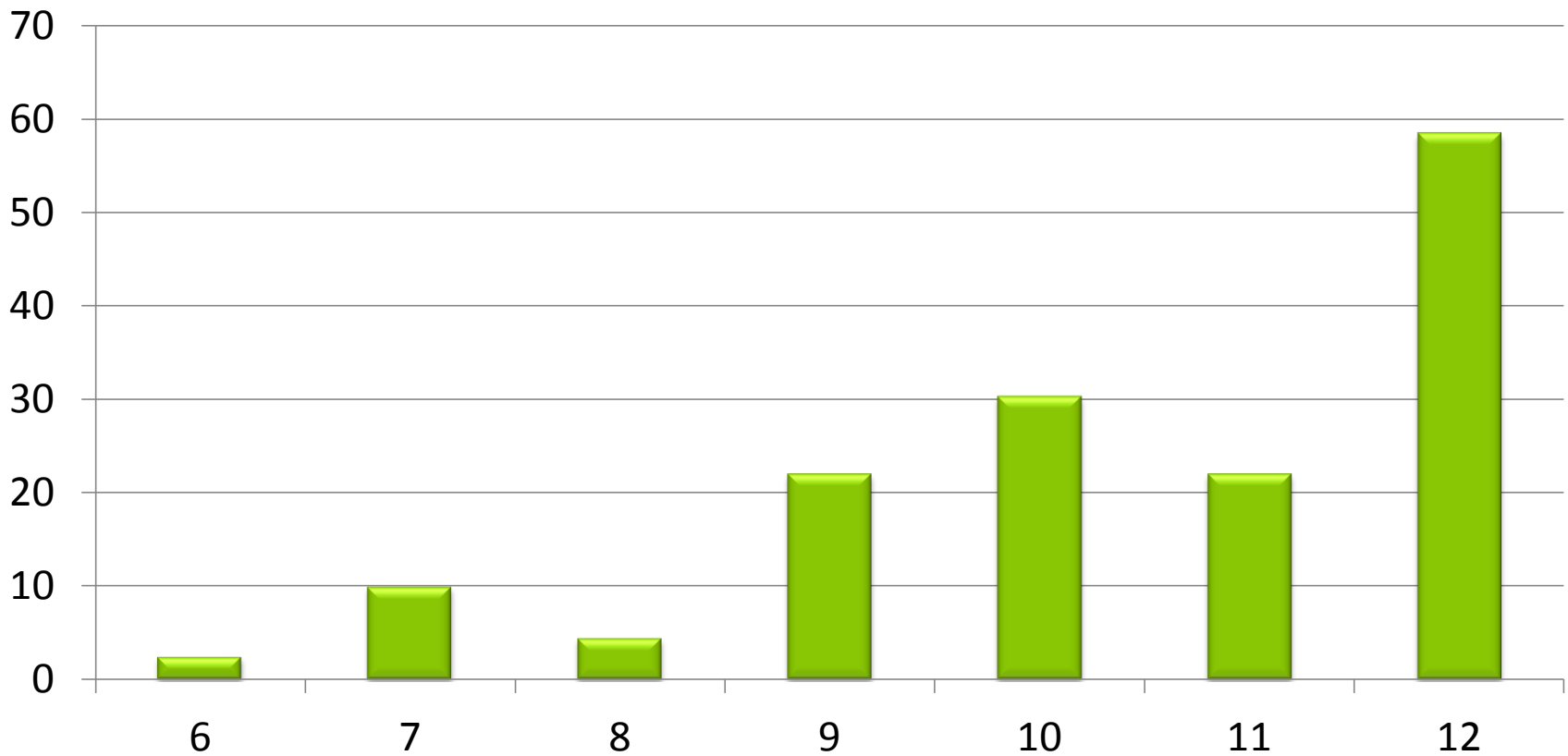
Alcohol is still the
#1 drug used by LOL
youth.

Lifetime Use of Alcohol Over the Years in L/OL



Lifetime Use of Alcohol 2017

% of Students



Access to Alcohol

Question: *If you wanted to, how easy would it be for you to get alcohol?*

	6	7	8	9	10	11	12
Very Easy/ Sort of Easy	16.5%	37.4 %	33.9%	53.3%	64.1%	56.8%	65.4%
Sort Of Hard/ Very Hard	73.5%	62.6%	66.1%	46.7%	35.9%	43.2%	34.6%

Sources of Alcohol

- Friends 56.6%
- Party w/out adult permission 43.0%
- Parents, with permission 41.5%
- Parents, w/out permission 40.3%
- Other people 36.4%
- Party with adult permission 34.2%
- Siblings 21.1%
- A restaurant 14.8%
- A store or bar (you buy it) 7.4%

Perceived Harm of Alcohol

Question: *How much do people risk harming themselves when they **binge drink** (5 or more drinks, once or twice a week)?*

	7	8	9	10	11	12
No Risk/ Slight Risk	15.5%	12.6%	11.4%	11.1%	12.7%	16.3%
Moderate Risk	37.8%	31.5%	32.4%	27.4%	31.6%	35%
Great Risk	34.4%	47.7%	48.6%	51.3%	43.2%	46.3%
I Don't Know	12.2%	8.1%	7.6%	10.3%	12.6%	2.5%



**"I don't want to
disappoint my parents"**
Is the #1 reason teens
choose not to drink

Rules at Home

(% reporting family “definitely” has clear rules discouraging use of alcohol)

6	7	8	9	10	11	12
81.7%	71.4%	72.3%	61.5%	58.2%	73.0%	52.8%

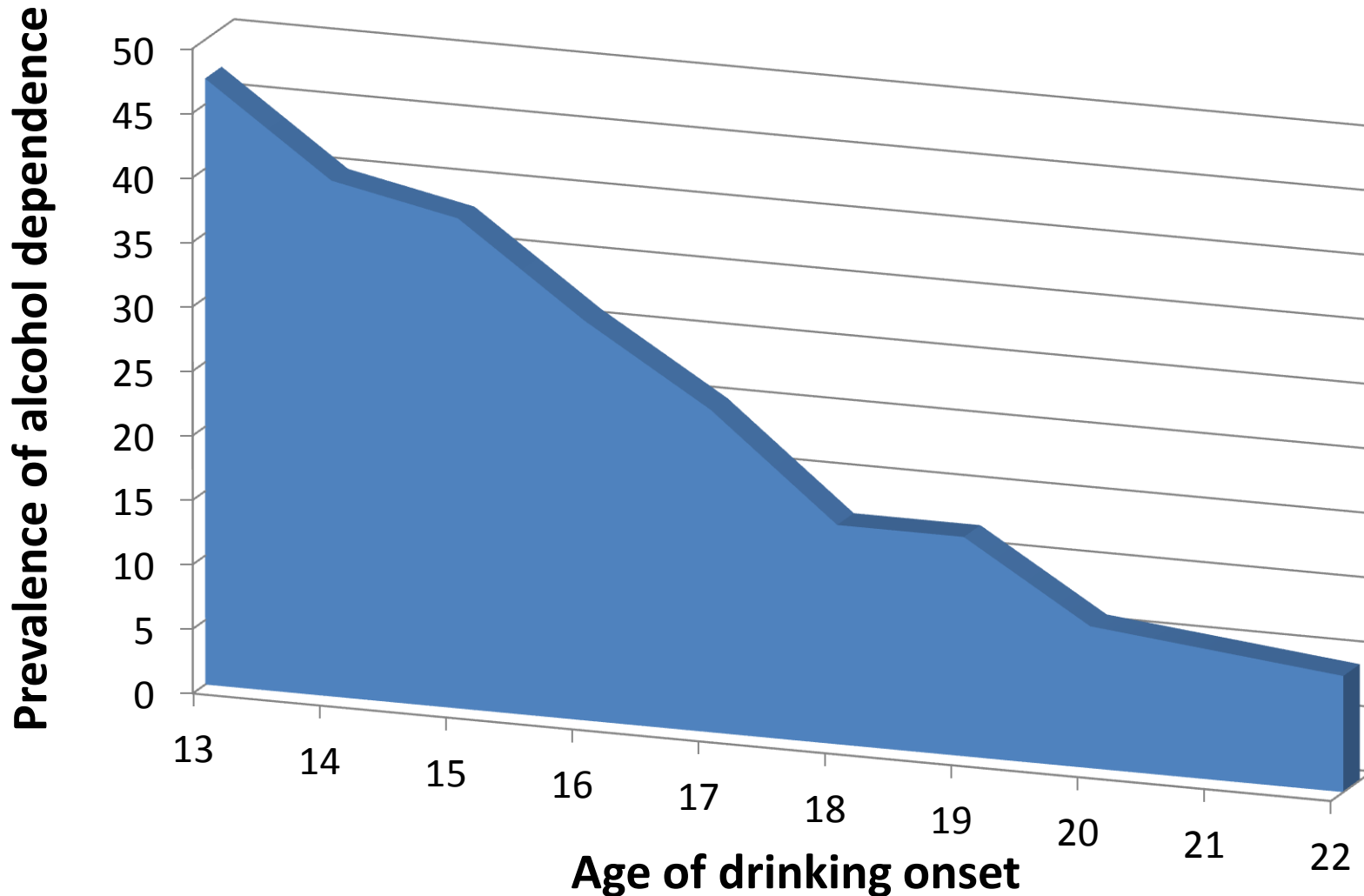
Parental Disapproval

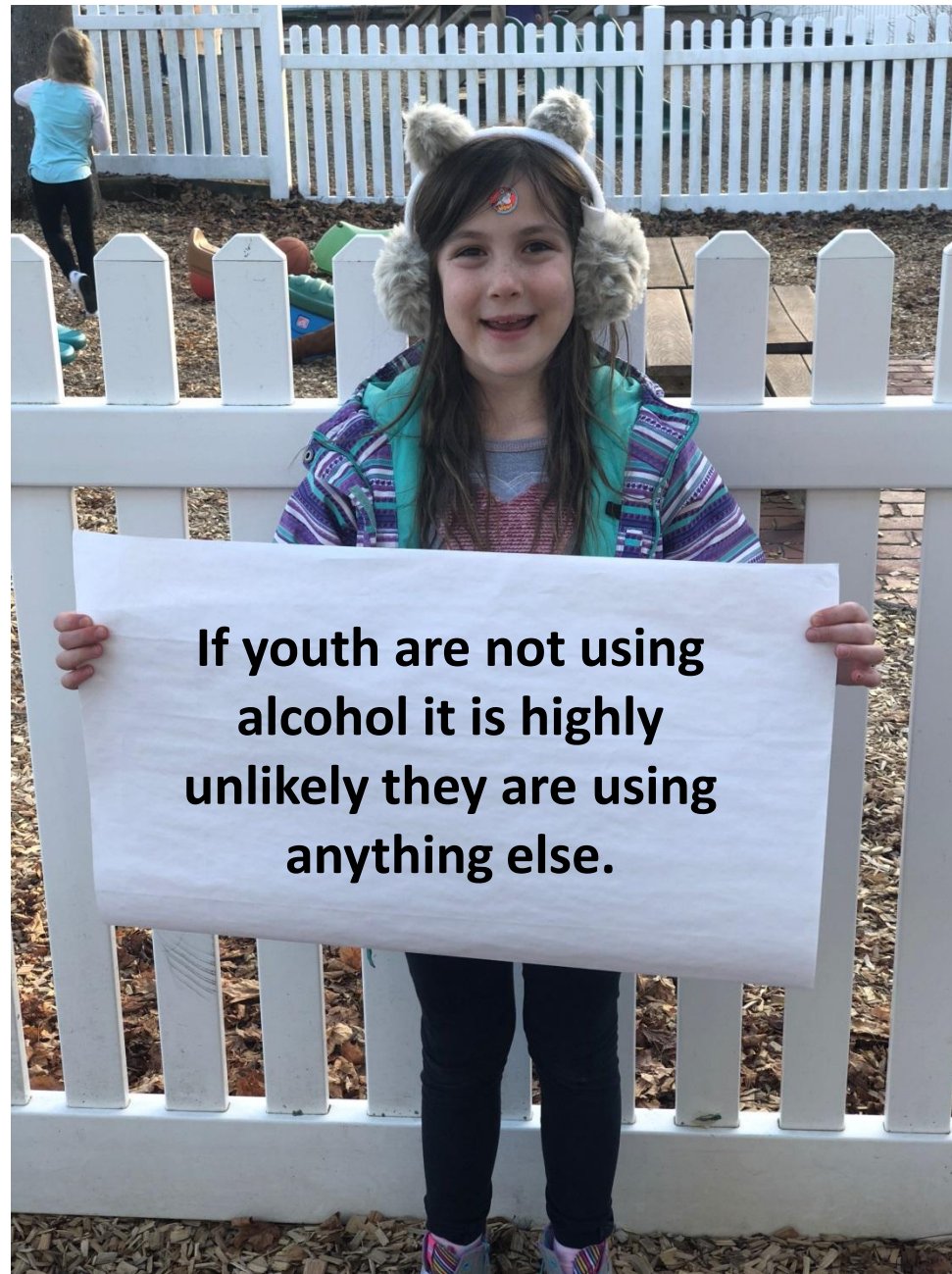
(% reporting parents feel it would be
“very wrong” to drink alcohol)

6	7	8	9	10	11	12
79.7%	76.1%	71.2%	63.6%	63.5%	53.2%	40.5%

Risk of alcohol dependence drops each year drinking is postponed:

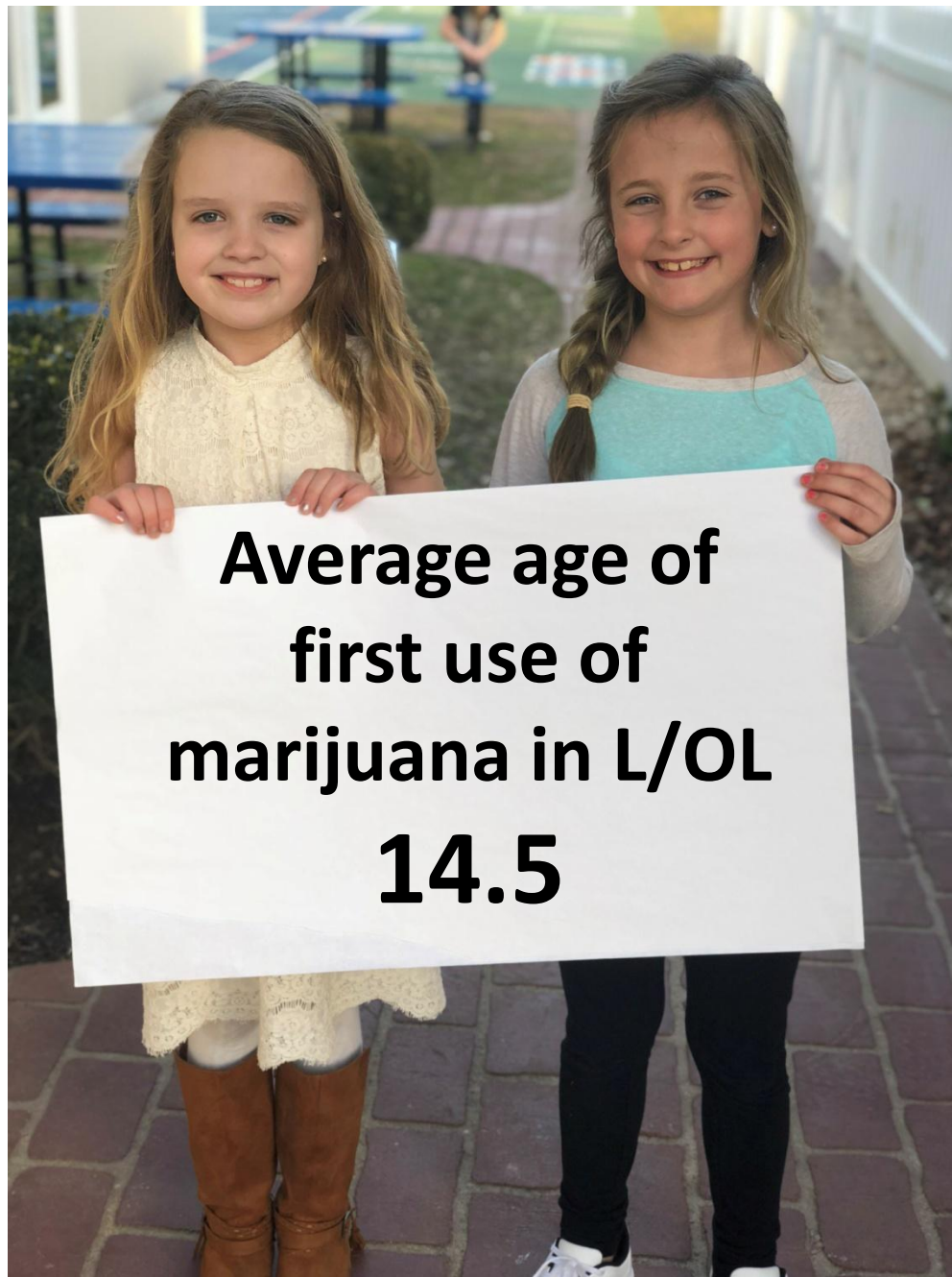
Children who drink alcohol (more than a few sips) before their 13th birthday are nearly five times more likely to develop alcohol dependence than those who begin drinking at age 21.





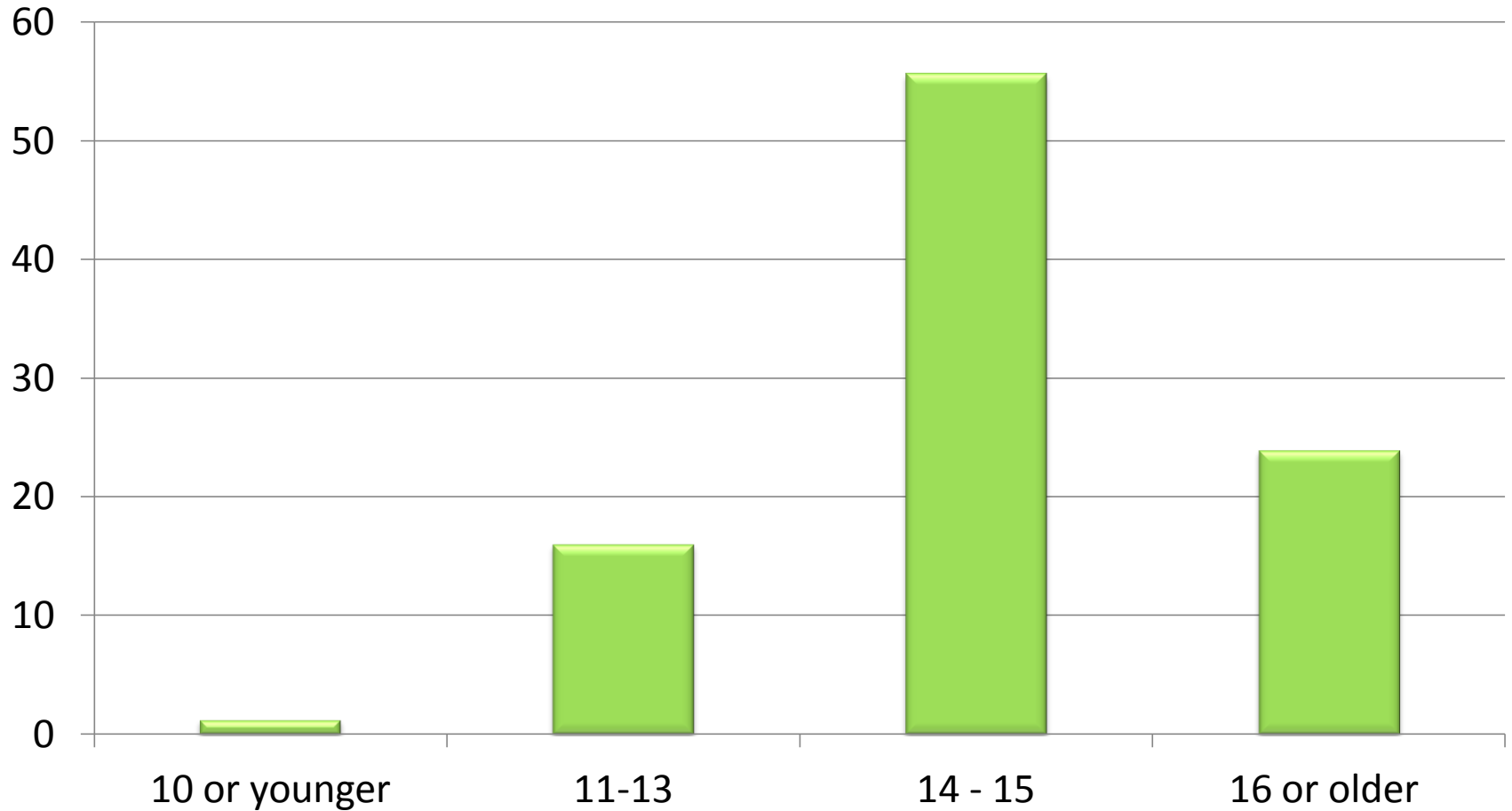
**If youth are not using
alcohol it is highly
unlikely they are using
anything else.**

MARIJUANA



**Average age of
first use of
marijuana in L/OL
14.5**

Age of First Use in L/OL: Marijuana

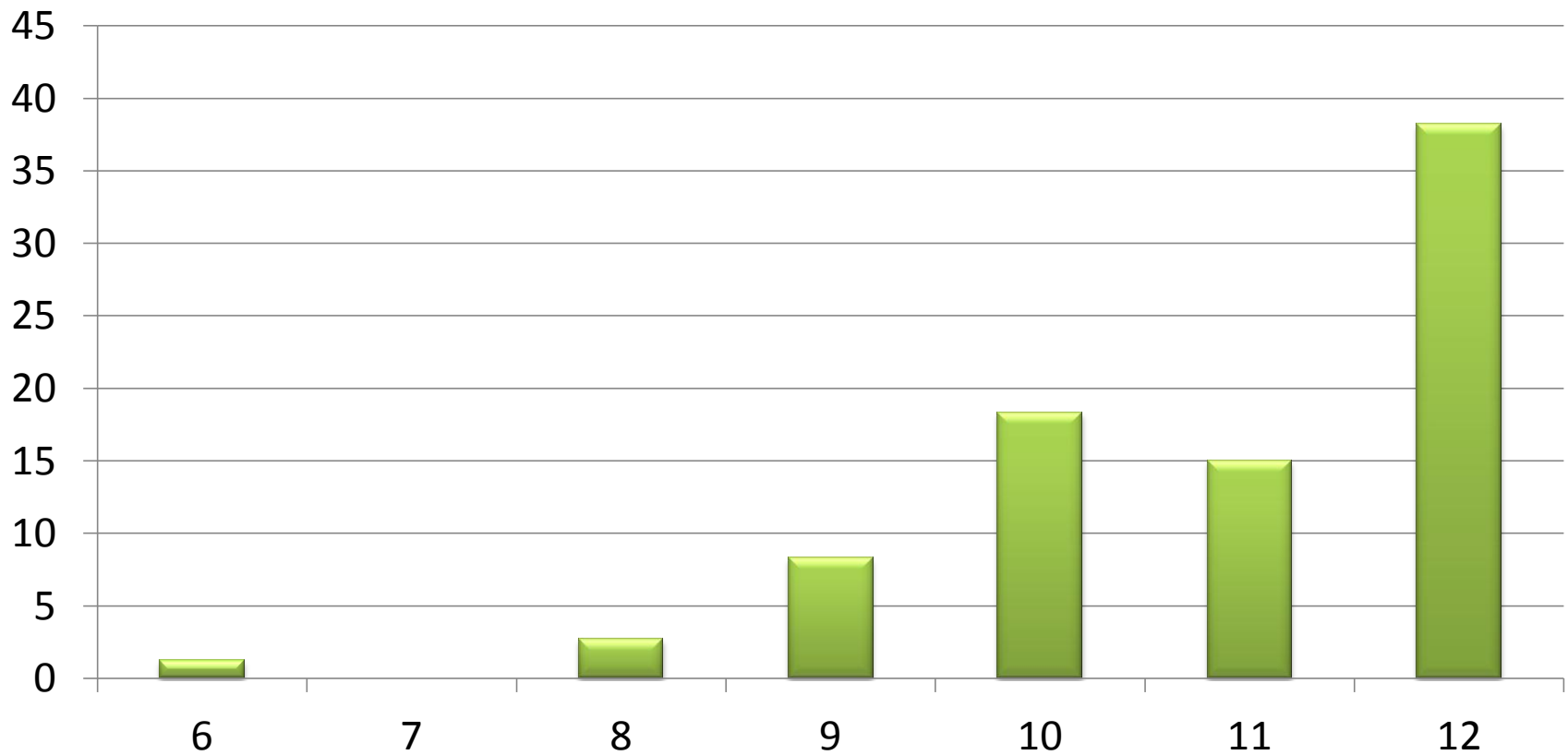


Marijuana is the 2nd most
used drug by LOL youth.

National conversation about
legalization, medical, and
decriminalization of marijuana
reduces perception of harm.

Lifetime Use of Marijuana 2017

% of Students



Access to Marijuana

If you wanted to, how easy would it be for you to get marijuana?

	6	7	8	9	10	11	12
Very Easy/Sort of Easy	2.6%	7.7%	15.3%	27.4%	43%	42.6%	56.9%
Sort Of Hard/Very Hard	97.4%	92.3%	84.7%	72.6%	57.1%	57.4%	43.1%

Sources of Marijuana

- Friends 76.6%
- You buy it in person 63.3%
- Others buy it for you 48.2%
- Parents, w/out permission 25.5%
- Siblings 16.6%
- Parents, with permission 5.8%

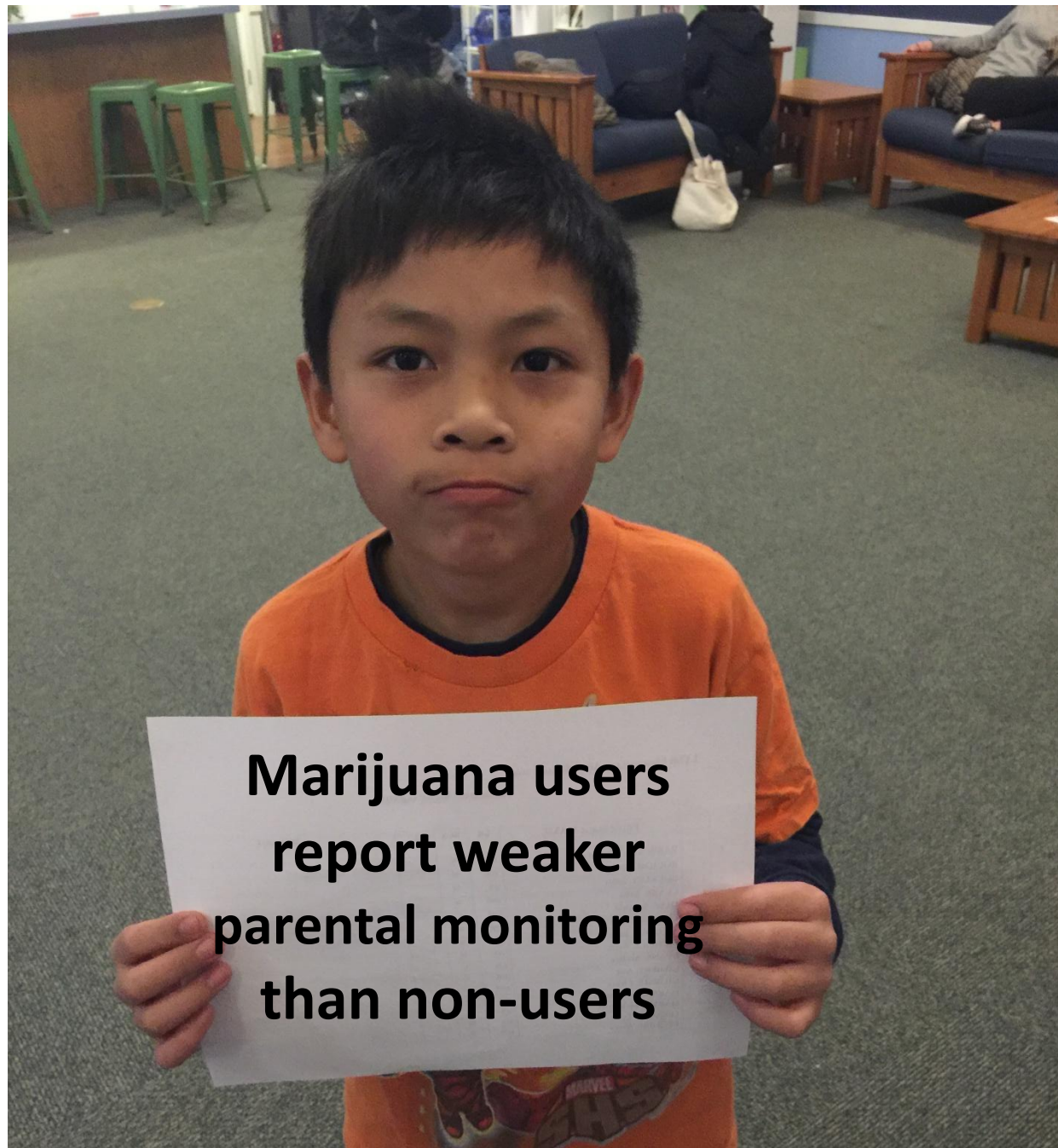
Marijuana: Places of Use

- Others' homes 84.9%
- Party, no adults 69.7%
- Woods, parks, street 68.8%
- My home 59.9%
- Party, with adult present 36.6%
- While driving 32.8%
- At school or school activity 20.0%

Perceived Harm of Marijuana

Question: *How much do people risk harming themselves when they use marijuana 1-2x per week?*

	6	7	8	9	10	11	12
No Risk/ Slight Risk	6.2%	8.9%	9.1%	27.1%	44.8%	36.8%	45.1%
Moderate Risk	14.4%	27.8%	26.4%	26.2%	21.6%	24.2%	20%
Great Risk	52.6%	47.8%	54.5%	34.6%	19.8%	27.4%	28.8%
I Don't Know	19.2%	15.6%	10.0%	12.1%	13.8%	11.6%	6.3%



**Marijuana users
report weaker
parental monitoring
than non-users**

Rules at Home

(% reporting family “definitely” has clear rules discouraging use of marijuana)

6	7	8	9	10	11	12
86.6%	81.3%	78.8%	75.2%	68.9%	77.8%	66.3%

Parental Disapproval

(% reporting parents feel it would be
“very wrong” to use marijuana)

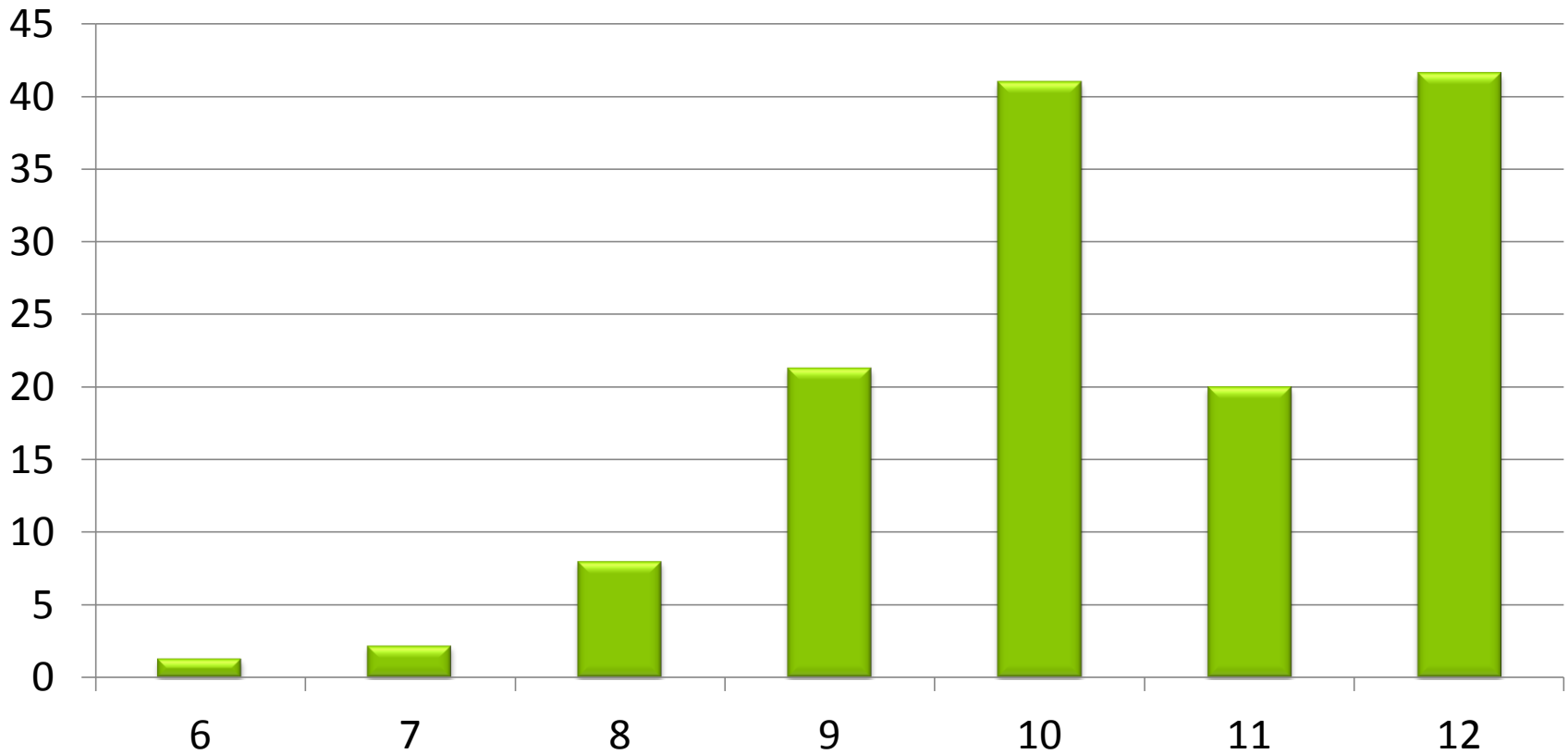
6	7	8	9	10	11	12
98.7%	93.4%	86.5%	72.9%	73.3%	71.3%	65.0%

E-CIGS & VAPING



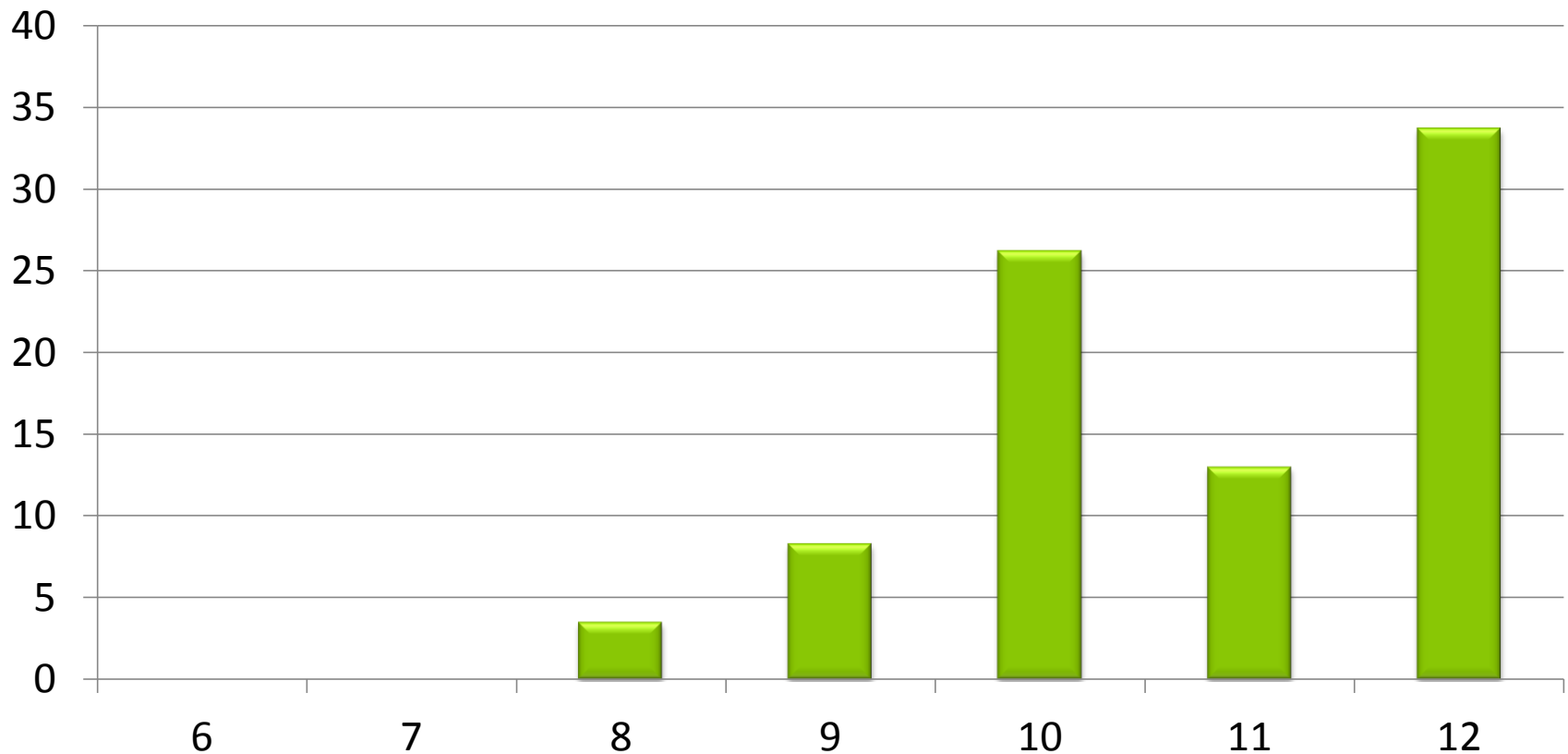
Lifetime Use of E-Cigs 2017

% of Students

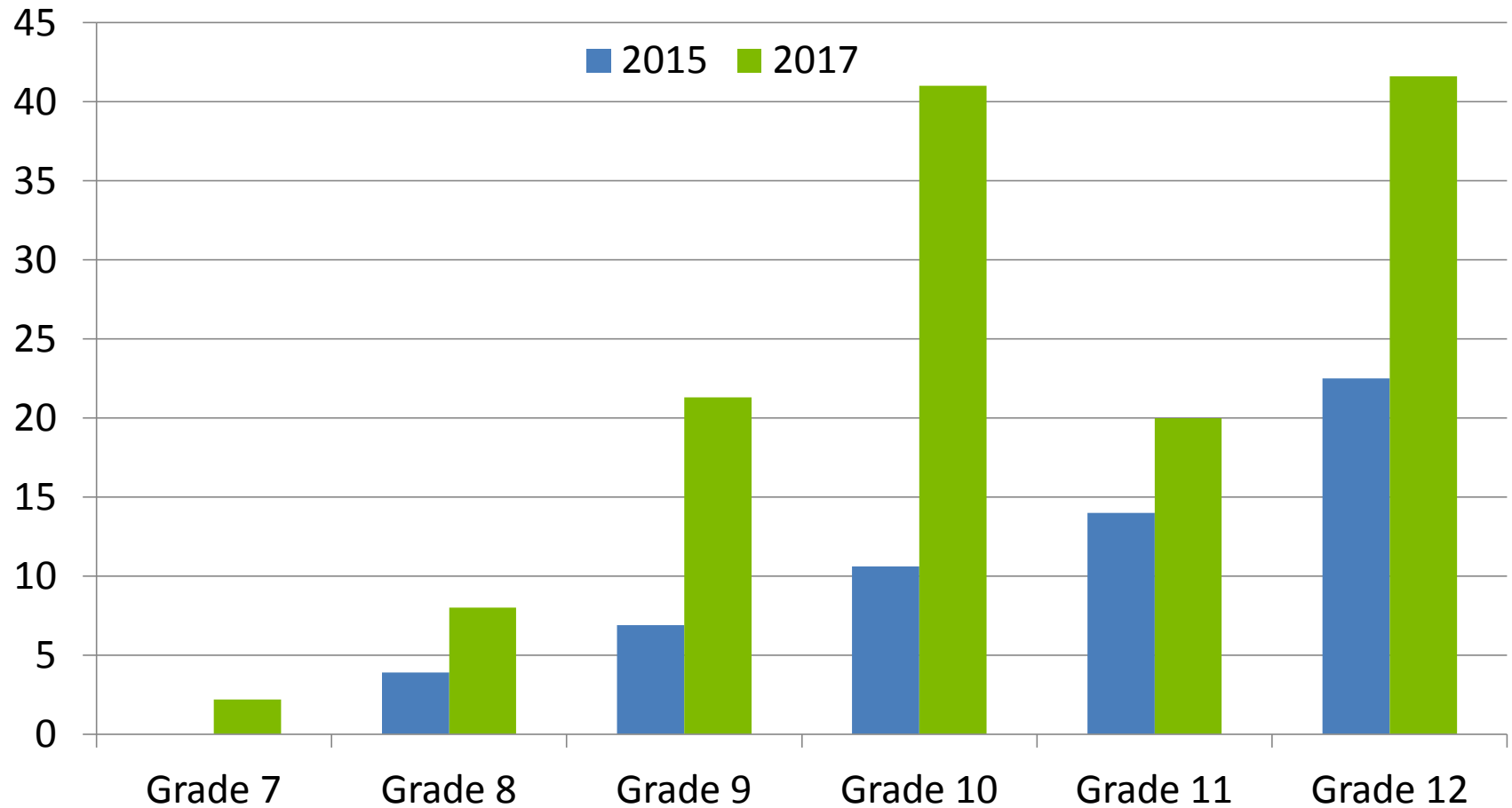


Recent Use of E-Cigs (in the last 30 days) 2017

% of Students



E-Cigs: 2015 vs. 2017



JUUL
SMOKING EVOLVED



Peer Attitudes:

My friends think it's _____ to Use Juul/E-Cigs

	6	7	8	9	10	11	12	Total
Not at All Wrong / A Little Bit Wrong	1.3	13.2	23.1	54.7	65.0	47.8	72.5	46.6
Wrong / Very Wrong	98.7	86.8	76.8	45.3	35.1	52.1	27.6	53.3

How easy is it to get JUUL/E-Cigs?

	6	7	8	9	10	11	12	Total
Very Easy / Sort of Easy	5.1	7.7	24.6	51.4	68.1	39.5	69.1	46.0
Sort of Hard/ Very Hard	94.9	92.3	75.5	38.6	31.9	49.4	30.9	54.0

Perceived Harm of E-Cig/Vape

Question: How much do people risk harming themselves when they use electronic cigarettes/Juul ?

	6	7	8	9	10	11	12
No Risk/ Slight Risk	7.8%	13.2%	18%	21.7%	42.7%	25.2%	28.4%
Moderate Risk	25.6%	34.1%	34.2%	29.2%	32.5%	31.6%	28.4%
Great Risk	42.3%	34.1%	36.0%	31.1%	15.4%	29.5%	35.8%
I Don't Know	24.4%	18.7%	11.7%	17.9%	9.4%	13.7%	7.4%

Concern: Risky Behavior

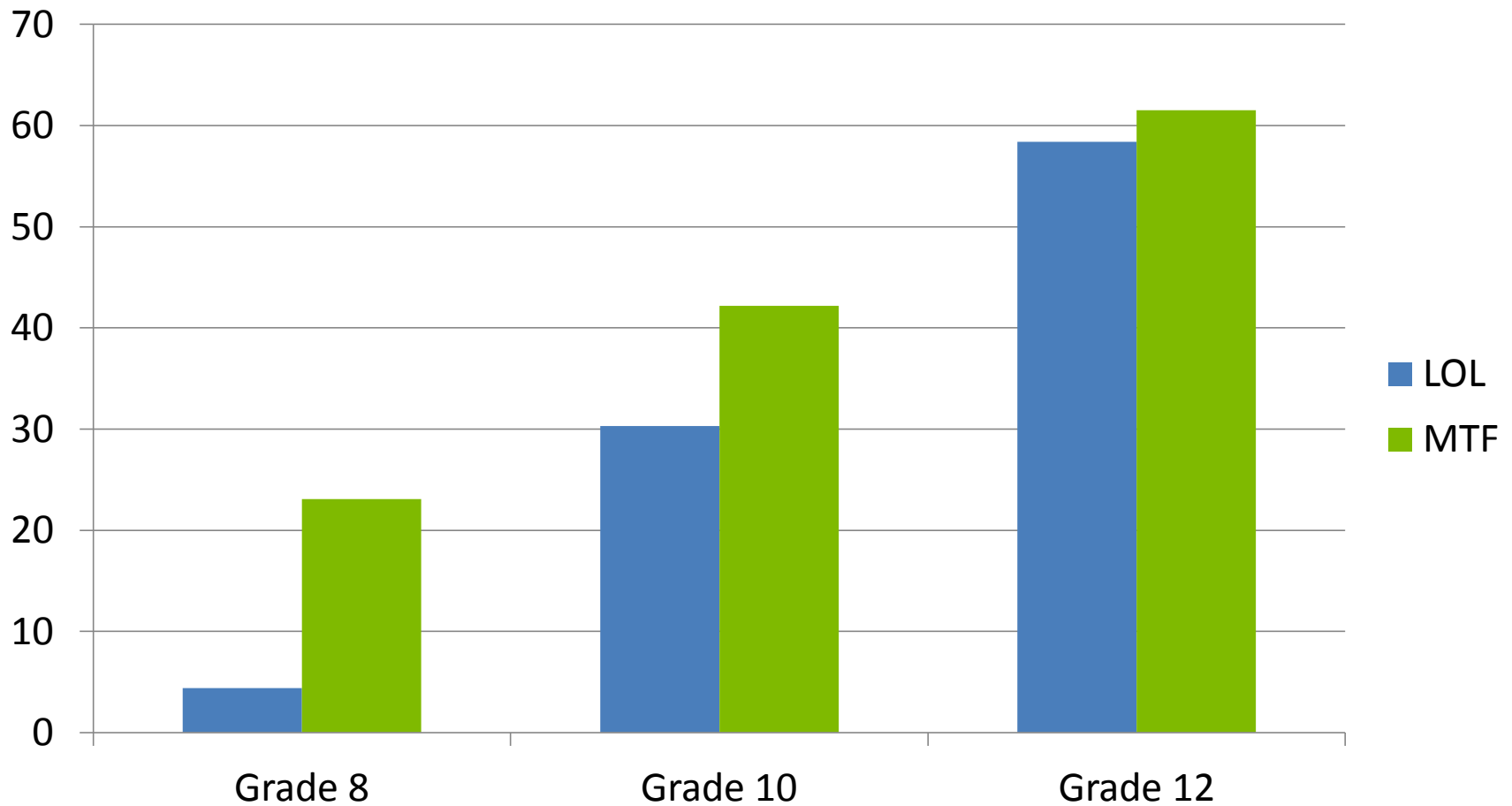
In the past year, did you do any of the following? (everyone asked)

	7	8	9	10	11	12
Drive under the influence	0%	0%	1.0%	1.7%	3.2%	8.5%
Ride with a driver (21 or older) under the influence	10.1%	9.0%	15.5%	6.1%	7.5%	5.6%
Ride with a driver (under 21) under the influence	2.2%	1.8%	3.9%	9.6%	10.9%	22.5%

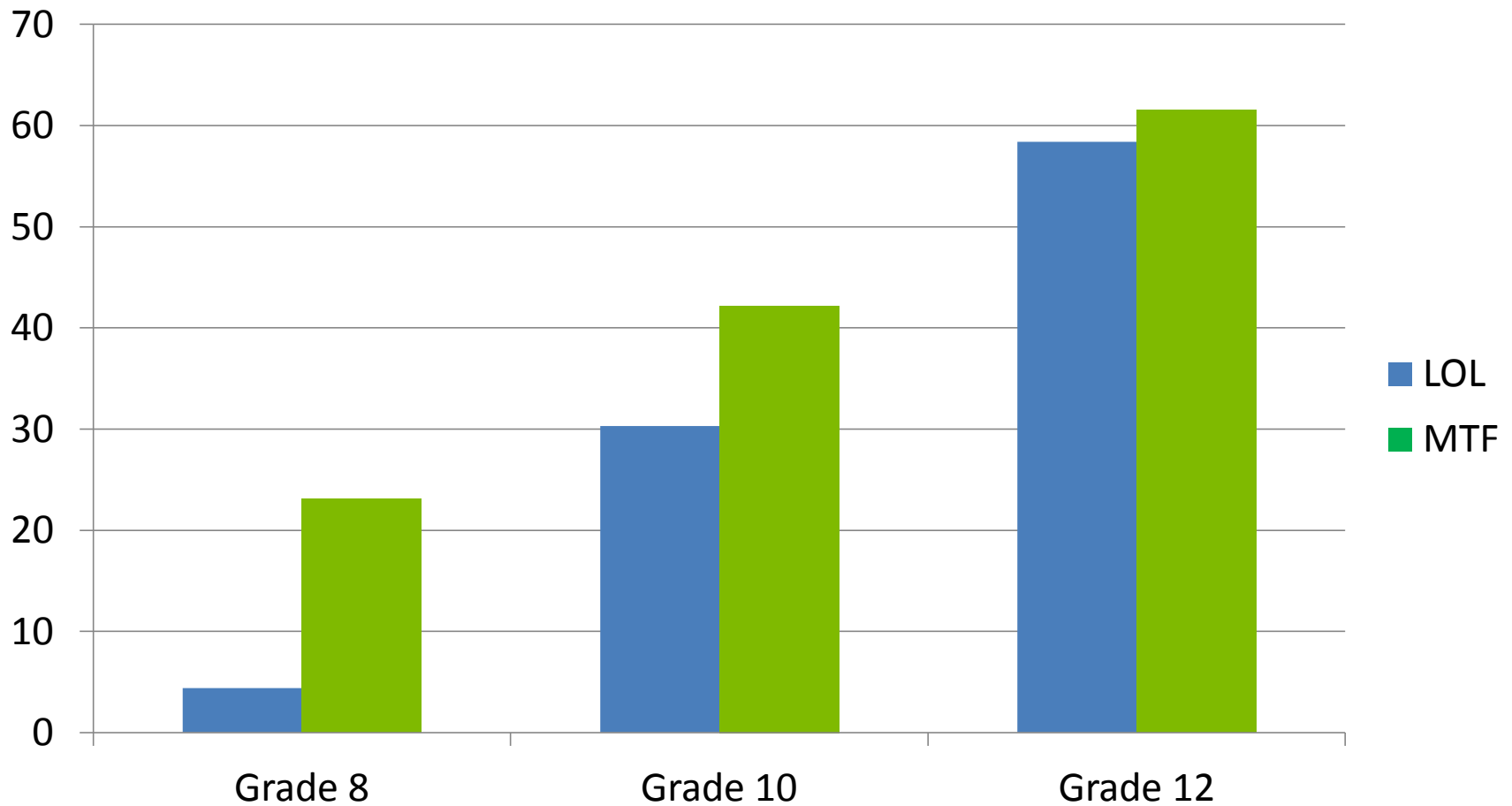


MTF = Monitoring the Future Survey

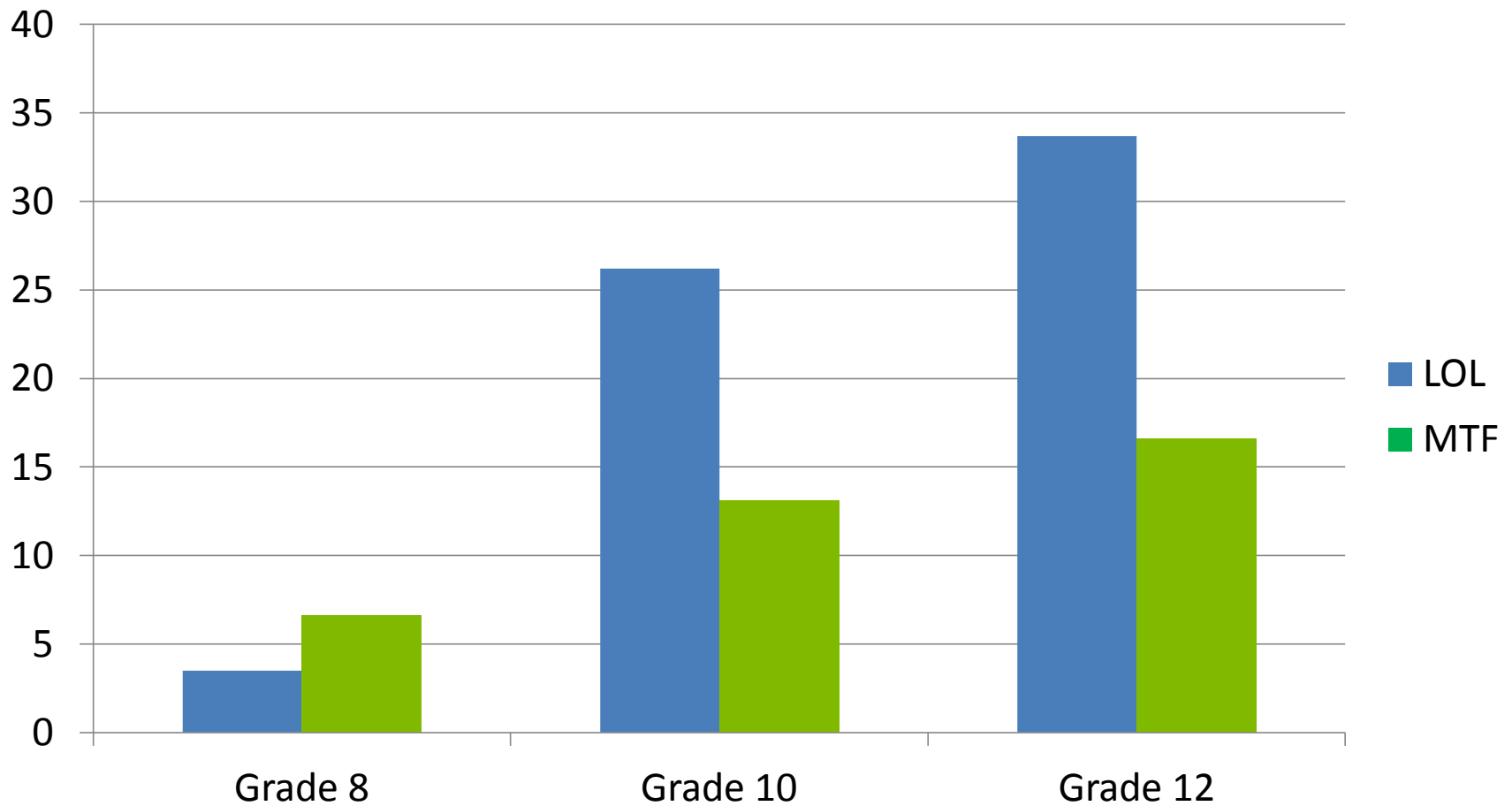
National Comparisons - Alcohol



National Comparisons - Marijuana



National Comparisons – E-Cig/Vape



Summary: Concerns

- Concern - ALCOHOL
 - Age of first use of alcohol beginning earlier
 - Alcohol use sharply increases between 8th & 9th grades
- Concern - MARIJUANA
 - Perception of harm decreasing
- Concern – E-CIGARETTES & VAPING
 - Increase in use in grades 9-12
 - Perception of harm is low
- Concern – PARENTS
 - Family rules need to be clearer regarding all substances

Next Steps:

- L/OL Prevention Coalition
 - Hold Focus Groups for Adults & Youth
 - Create new strategic plan to address concerns
- Reach youth & parents at younger ages
- Support Enforcement



Join Us!
First Tuesday of the Month at 7:00 p.m.